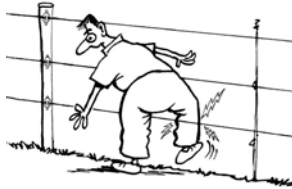


## 1. AVOID CONTACT



Do not touch the fence with head, neck, mouth or torso



Do not climb over, through or under



Use a gate or a specially designed crossing point

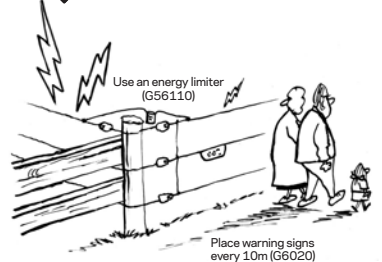
## 2. KEEP OTHERS SAFE



Keep young children away from electric fencing



Do not place single live wires at head height



In public areas:

- Use an energy limiter (G56110)
- Place warning signs (G6020) every 10m and at gates & access points.

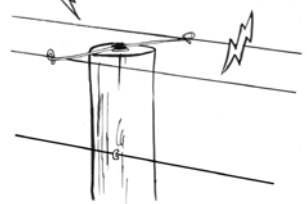
## 3. AVOID ENTRAPMENT



Do not electrify barbed wire fences



Turn fence off before working on water trough

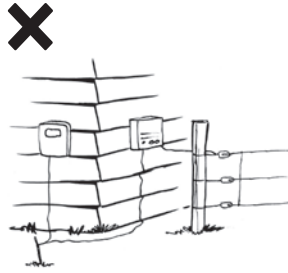


Place offsets a minimum distance of 150mm from non-electrified fence wire

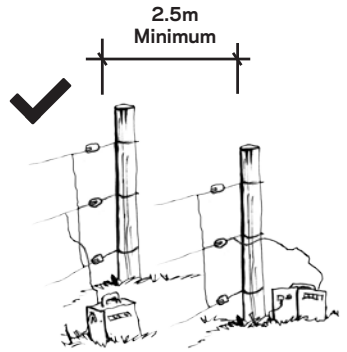
## 4. OTHER TIPS



Do not supply one electric fence with two energizers

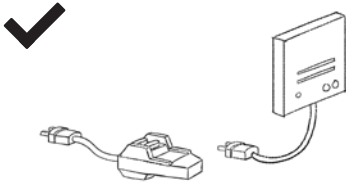


Do not connect energizer earth to mains earth

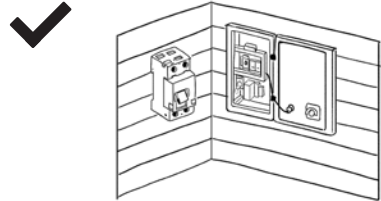


Have separate fences a minimum distance of 2.5 meters apart

## 5. ALWAYS USE AN RCD (Residual Current Device) OR A GFCI (Ground Fault Circuit Interrupter)



OR



## 6. OVERHEAD POWER LINE SAFETY

a. Earth top wire  
b. Observe minimum clearance distances

